

From DUF to AARIN

- **DUF (1987-1997)**
 - Drug Use Forecasting (DUF) Program
 - NIJ funded in 12-23 cities
- **ADAM (1997-2003)**
 - Arrestee Drug Abuse Monitoring Program
 - 38 cities across the US, and 7 foreign countries
 - ASU team operated Maricopa and Pima sites
- **AARIN (2007-present)**
 - Locally initiated by Maricopa County based on NIJ's ADAM Program
 - Began data collection January 2007

Center for Violence Prevention and Community Safety **ASU**

ADAM Sites

Center for Violence Prevention and Community Safety **ASU**

Building Partnerships

Maricopa County Board of Supervisors
and Arizona State University

CENTER for
VIOLENCE PREVENTION
and COMMUNITY SAFETY
ARIZONA STATE UNIVERSITY



Center for Violence Prevention and Community Safety



AARIN

The Arizona Arrestee Reporting
Information Network

- Maricopa County has re-initiated data collection, as of January 2007
 - Funded by Maricopa County
- Currently collecting data in:
 - 4th Avenue Jail
 - Glendale
 - Mesa
 - South East Juvenile Complex
 - Durango Juvenile Detention Facility

Center for Violence Prevention and Community Safety



Program in Brief

- An Information System
 - interviews and drug testing
 - drug use rates and service needs
- A Monitoring System
 - trends and prevalence rates
 - special populations
- A Research Platform
 - supplemental questionnaires
 - longitudinal evaluations & program planning
 - enforcement, treatment, and prevention strategies
- A Policy Tool
 - rapid information turn-around
 - evidence-based policymaking

Center for Violence Prevention and Community Safety



Research Protocols

- Core Interview Instrument
 - Periodic supplementary instruments
- Voluntary, anonymous, and confidential interviews
- Voluntary, anonymous, and confidential drug testing
- County level data collection in jails
- Professionally trained interviewers and site staff

Center for Violence Prevention and Community Safety



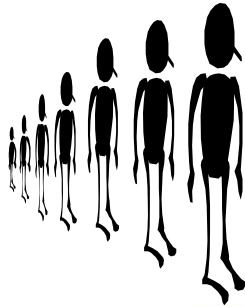
Sampling Strategy

Probability sample

- Probability sample of bookings

Why does this matter?

- Known sampling properties for:
 - trends
 - prevalence estimates



Center for Violence Prevention and Community Safety



Core Interview Instrument

- Demographics
 - Age, race/ethnicity, education, employment, housing
- Drug Use
 - 14 specific drugs
- Treatment
 - Substance abuse and mental health
- Prior arrests and incarceration
- Firearms
- Gangs
- Victimization
- Immigration and Naturalization

Center for Violence Prevention and Community Safety



Addenda Instruments

- Court Processing
- Criminal History / Recidivism
- Drug Market
- Dual Diagnosis
- Firearm
- Gambling
- Gangs
- Mental Health
- Methamphetamines
- Other Drug Use
- Intravenous Drug Use / Syringes
- Drug Use, Lifestyle, and Treatment

Center for Violence Prevention and Community Safety



Voluntary Drug Testing

- Urine Specimens
 - self-administered
 - no observation
 - shipped daily to central laboratory
- Drug Panel
 - Four Schedule I drugs: marijuana, cocaine, methamphetamine, and heroin; plus alcohol

Center for Violence Prevention and Community Safety



Potential for Community-Based Research

- Firearms
- Gangs
- Domestic Violence
- Children of Arrestees
- Police Response
- Court Services
- Probation Services
- Drug Markets
- Alcohol / Tobacco Use
- Treatment/ Service Needs
- Dual Diagnosis
- Child Abuse
- HIV, STDs
- Access-to-care issues

Center for Violence Prevention and Community Safety



Potential Law Enforcement Uses of the Data

- Measure impact of interventions and how they affect drug markets
 - Research platform for evaluating interdiction efforts
 - Trend analysis of drug purchasing patterns of arrestees
- Law Enforcement Intelligence
 - GIS/ crime mapping
 - Geo-coded arrest locations



Center for Violence Prevention and Community Safety



Potential Court Services Uses of Data

- Case Processing Information
 - pretrial services
 - sentencing
- Specialized Courts
 - Drug Courts
 - DUI
 - Mental Health



Center for Violence Prevention and Community Safety



Potential Probation Services Uses of Data

- Risks/Needs
 - Dual diagnosis
 - Drug treatment needs
- Special Populations
 - Sex offenders
 - Domestic Violence
 - Proposition 200
- Levels of Supervision
 - Intensive probation



Center for Violence Prevention and Community Safety



Potential Applications for the Treatment Community

- Prevalence of dependence & co-morbidity
- Access to treatment, need for treatment, & utilization of treatment
 - Identifying county treatment needs
- Jail services (e.g., drug treatment in jail)
- Service planning
 - Children at risk
 - HIV, other STDs

Center for Violence Prevention and Community Safety



Other Potential Applications of Data

- Provide baseline data
- Assess initiatives
- Evaluate programs
- Grant writing & funding
- Special topic studies
- Crime analysis



Center for Violence Prevention and Community Safety

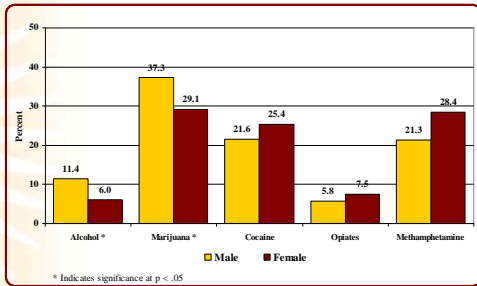


Select AARIN Findings

Center for Violence Prevention and Community Safety



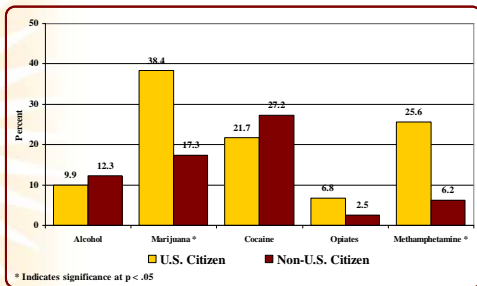
Percent of Adult Arrestees Testing Positive for Drugs by Sex, AARIN 1st Quarter 2008 (n=598)



Center for Violence Prevention and Community Safety



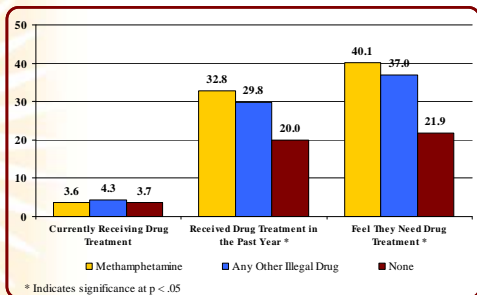
Percent of Adult Arrestees Testing Positive for Drugs by Current Citizenship Status, AARIN 1st Quarter 2008 (n=597)



Center for Violence Prevention and Community Safety



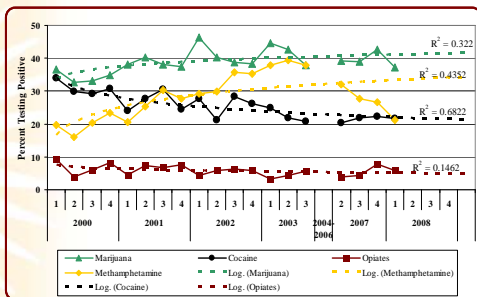
Percent of Arrestees Testing Positive for Meth by Drug Treatment History and Need, 1st Quarter 2008 (n=587)



Center for Violence Prevention and Community Safety



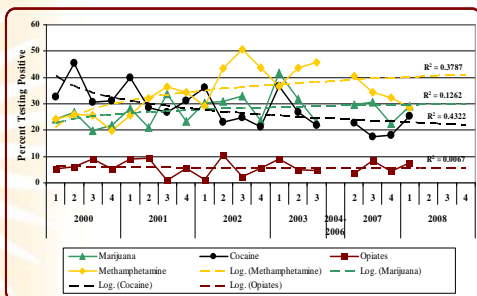
Percent of Male Arrestees Testing Positive for Drugs by Quarter, 2000-2008



Center for Violence Prevention and Community Safety



Percent of Female Arrestees Testing Positive for Drugs by Quarter, 2000-2008



Center for Violence Prevention and Community Safety



AARIN Co-Occurring Disorder Addendum Findings

Center for Violence Prevention and Community Safety



AARIN Definitions of Co-Occurring Disorders

- **Co-Occurring Disorders (or dual diagnoses):**
 - A condition when an individual presents with both a mental illness and substance abuse or dependence.
- **The AARIN Dual Diagnosis Addendum:**
 - Comprised of two parts:
 - The first specific to substance use, and
 - The second specific to mental health.
 - Not a diagnostic screening tool for mental illness.

Center for Violence Prevention and Community Safety



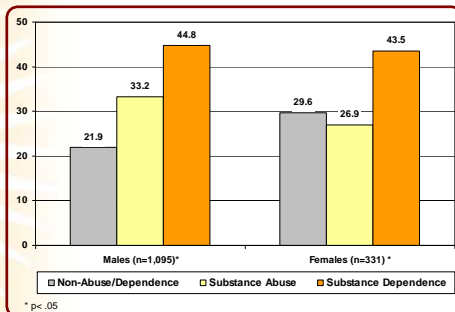
Substance Abuse and Dependence

- **The first part of the Dual Diagnosis Addendum included 18 substance abuse/dependence items:**
 - 4 designated to assess substance abuse;
 - 10 to assess substance dependence; and
 - 4 additional items related to intravenous drug use, prior substance abuse/dependence treatment, and family history of substance misuse.
- The diagnostic criteria from the American Psychiatric Association's Diagnostic and Statistical Manual of Mental Disorders, Fourth Revision (DSM-IV) for substance abuse and dependence provided the outline for our substance abuse/dependence screening questions.

Center for Violence Prevention and Community Safety



Substance Abuse and Dependence by Sex (n=1,426)



Center for Violence Prevention and Community Safety



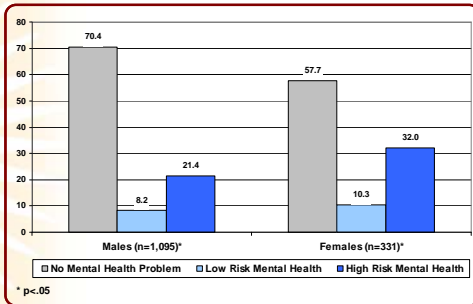
Mental Health Problems

- Mental Health Problems were assessed using respondents' history with professional mental health:
- **Low Risk:**
 - Have you ever been told by a counselor, social worker, or doctor that you have a mental illness or emotional problem?
 - Have you ever been treated by a counselor, social worker, or doctor for a mental health problem?
- **High Risk:**
 - Have you ever been prescribed medication for a mental health problem?
 - Have you ever been hospitalized for a mental health problem?

Center for Violence Prevention and Community Safety



Mental Health Problem Risk Level by Sex (n=1,426)



Center for Violence Prevention and Community Safety

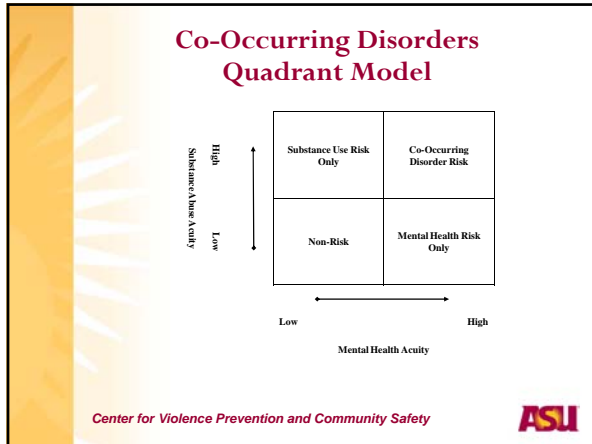


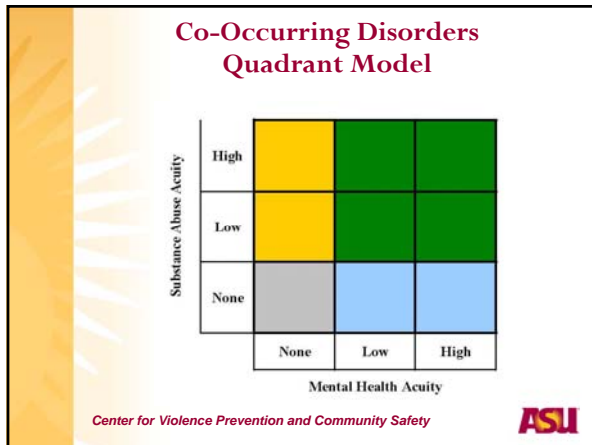
Co-Occurring Disorder Risk

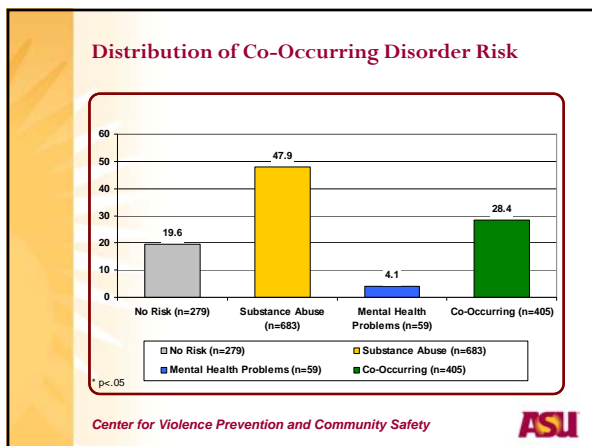
- Respondents were assigned to one of four categories of risk for co-occurring disorders.
- A simplified version of the co-occurring disorder quadrant model was employed to create the four distinct categories:
 - None – Not at risk for either substance abuse or mental health problems,
 - Substance Abuse only,
 - Mental Health Problems only,
 - Co-Occurring – at risk for both substance abuse and mental health problems.

Center for Violence Prevention and Community Safety

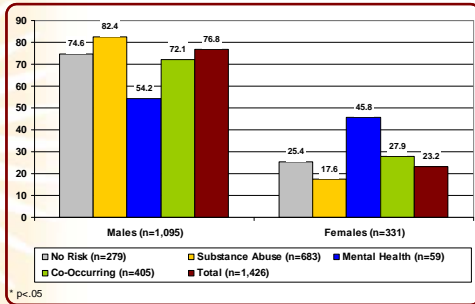








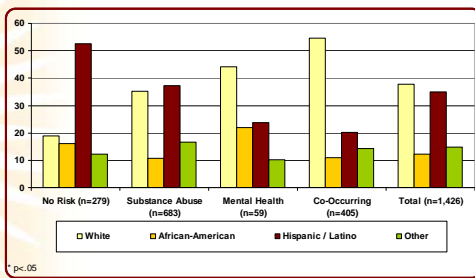
Co-Occurring Disorder Risk Status by Sex



Center for Violence Prevention and Community Safety



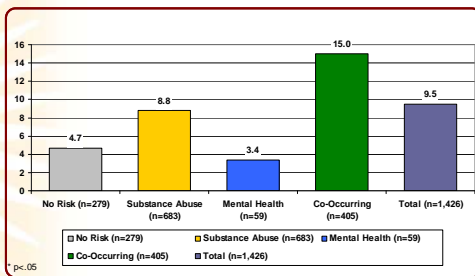
Race by Co-Occurring Disorder *



Center for Violence Prevention and Community Safety



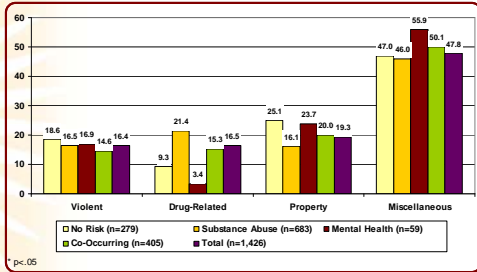
Homelessness by Co-Occurring Disorder *



Center for Violence Prevention and Community Safety



Current Offense by Co-Occurring Disorder *



Center for Violence Prevention and Community Safety



Prior Arrests and Incarceration

- Respondents classified as at-risk for a Co-Occurring disorder, were:
 - Significantly more likely to have been arrested in the past 12 months.
 - 20% were arrested 3 or more times
 - On average, they were arrested 2.3 times in the past year, compared to 1.5 times for the non-risk group.
 - More than 15% of them had served time in jail or prison in the past 12 months at least 3 times, only 5-10% of other groups were incarcerated so frequently.

Center for Violence Prevention and Community Safety



Gangs and Co-Occurring Disorders *

	Co-Occurring Category				Total
	No Risk	Substance Abuse	Mental Health	Co-Occurring	
n=	279	683	59	405	1,426
	%	%	%	%	%
Gang Membership Status *					
Non-Gang Member	90.7	85.9	91.5	77.3	84.6
Gang Associate	2.2	4.4	3.4	8.1	5.0
Current Gang Member	2.9	4.1	3.4	7.7	4.8
Former Gang Member	4.3	5.6	1.7	6.9	5.5

Center for Violence Prevention and Community Safety



Summary, continued

- Nature of the problem of co-occurring disorder arrestees:
 - Societal and public health sector demands:
 - Twice as likely to be homeless
 - Almost half as likely to be employed at least part-time
 - Significantly more likely to be suicidal and IV drug use
 - Criminal justice system demands:
 - Less likely to be violent offenders
 - More likely to be arrested and jailed, and more frequently
 - At significant risk for violent victimization – including assaults, aggravated assaults, injuries from firearms and other weapons, and robberies.

Center for Violence Prevention and Community Safety



Arizona Arrestee Reporting Information Network *AARIN*

- Building Data Infrastructure
- Building Partnerships
- Leveraging Resources
- Informed Policy and Decision Making
- Research Based with Historical Leverage

Center for Violence Prevention and Community Safety



CENTER for
VIOLENCE PREVENTION
and COMMUNITY SAFETY
ARIZONA STATE UNIVERSITY

Charles Katz, Ph.D.

David Choate, M.A.

www.west.asu.edu/cvpcs/

(602) 543-5959

ckatz@asu.edu

David.Choate@asu.edu

Center for Violence Prevention and Community Safety